

Business Mathematics (BK/IBA) – Quantitative Research Methods I (EBE) Digital test 2 (sample)

Question 1

b)

Family name	Galt
Given name	John
Student number	1234567
Programme	IBA
Date	1 September 2015

Question 2

a)

$T = 90N(N - 1)$, where T is total duration in minutes and N is the number of participating clubs.

b)

$$C = (1 - AB) \left| \frac{B}{(A+B)^2} \right|$$

Question 3

a)

The screenshot shows an Excel spreadsheet with the following data:

	A	B	C	D	E	F	G	H	I	J	K	L	M
1	1	0	-4	2		5		-0.0303	0.181818	-0.30303	-0.18182		1.848485
2	3	2	0	0		6		0.045455	0.227273	0.454545	0.272727		0.227273
3	-1	0	1	-2		0		-0.33333	6.53E-18	-0.33333	-6.5E-18		-1.66667
4	-1	2	-1	3		-5		-0.15152	-0.09091	-0.51515	0.090909		-1.75758

b)

Book2 - Microsoft Excel

File Home Insert Page Layout Formulas Data Review View Add-Ins

Clipboard Font Alignment Number Styles Cells Editing

Calibri 11

General

Insert Delete Format

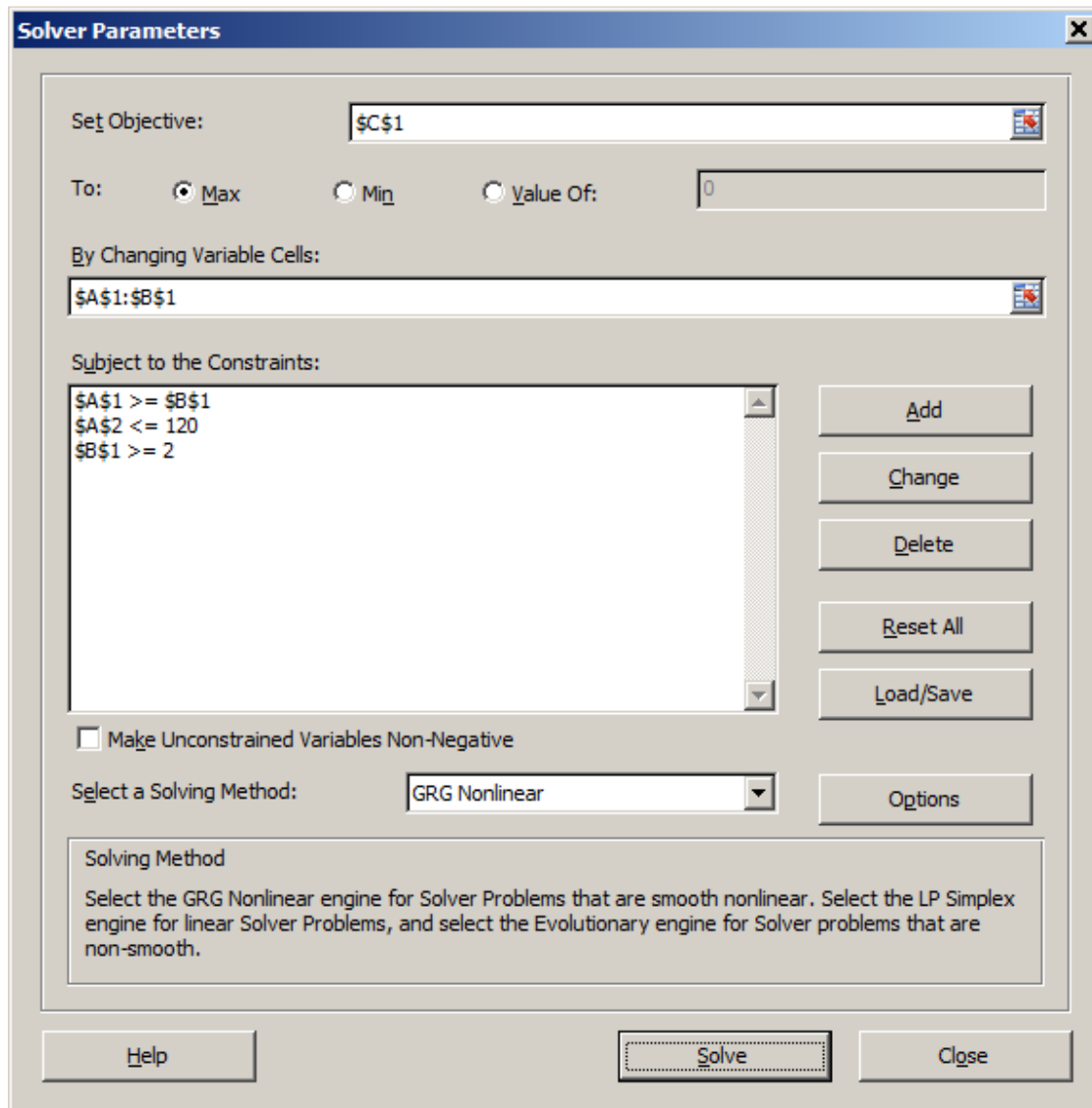
Sort & Filter Find & Select

K10 {=A8:C10+E1:G3-2*I1:K3}

	A	B	C	D	E	F	G	H	I	J	K
1	-1.3	2.1			3	0	2		1	0	0
2	3.17	-0.9			0	4	-2		0	1	0
3	-4.6	5.2			1	-2	6		0	0	1
4											
5	-1.3	3.17	-4.6								
6	2.1	-0.9	5.2								
7											
8	6.1	-6.011	16.9						7.1	-6.011	18.9
9	-6.011	10.8589	-19.262						-6.011	12.8589	-21.262
10	16.9	-19.262	48.2						17.9	-21.262	52.2
11											

Ready 100%

c)



d)

Value(s) of x	-1.545 and 1.131
-----------------	------------------

Do not forget to save this file regularly!