

Business Mathematics (BK/IBA) – Quantitative Research Methods I (EBE)
Digital test retake 1

Question 1

b)

Family name	Galt
Given name	John
Student number	1234567
Programme	IBA
Date	13 January 2016

Question 2

a)

$$\prod_{k=1}^n \zeta_k = \begin{cases} 0 & \text{if } \zeta_k = 0 \text{ for at least one } k \in [1, n] \\ c \neq 0 & \text{otherwise} \end{cases}$$

b)

$$\mathbf{f} = \mathbf{A}\mathbf{d} + \mathbf{e}$$

or

$$f_i = \sum_{j=1}^3 a_{ij}d_j + e_i \quad (i = 1, \dots, 23)$$

c)

$$C = Np \frac{100 - D}{100}$$

where C is the cost, N the number of office chairs, p the price per chair, and D the discount percentage.

Question 3

b)

Formula in E2	=C2/C\$2 or =\$C2/\$C\$2
---------------	--------------------------

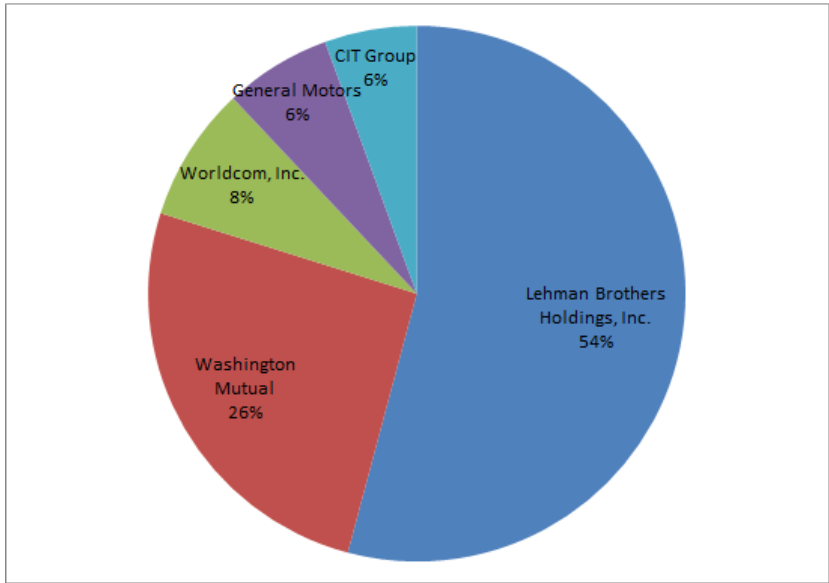
c)

Formula in F2	=IF(C2>40000000000;"huge";"large")
---------------	------------------------------------

d)

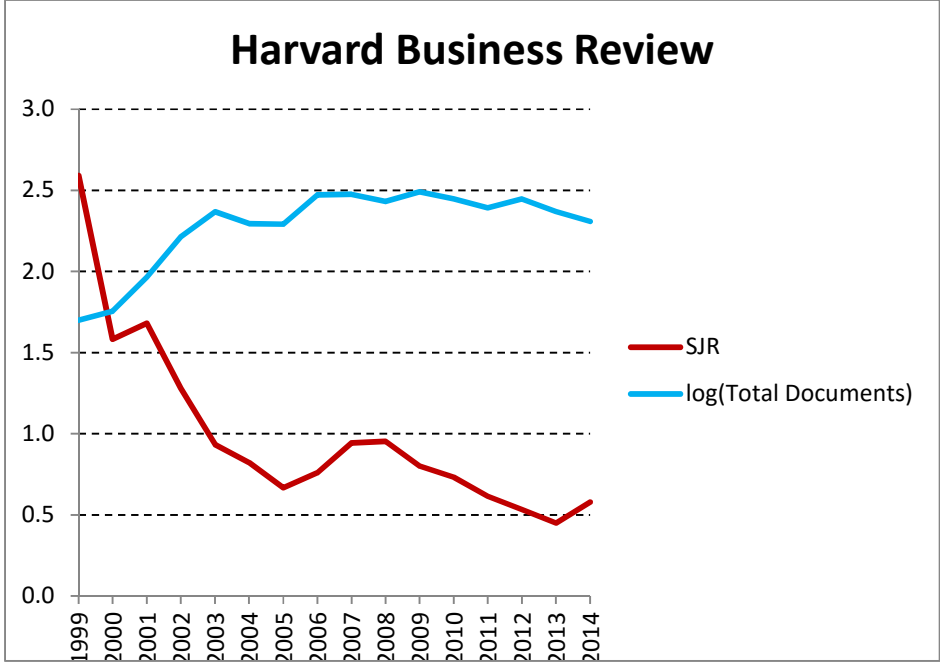
Formula	=COUNTIF(C2:C21;"<35000000000")
---------	---------------------------------

e)



Question 4

b)



c)

Formula in C16	=C13+B16 or =SUM(\$B13:C13)
----------------	-----------------------------

Question 5

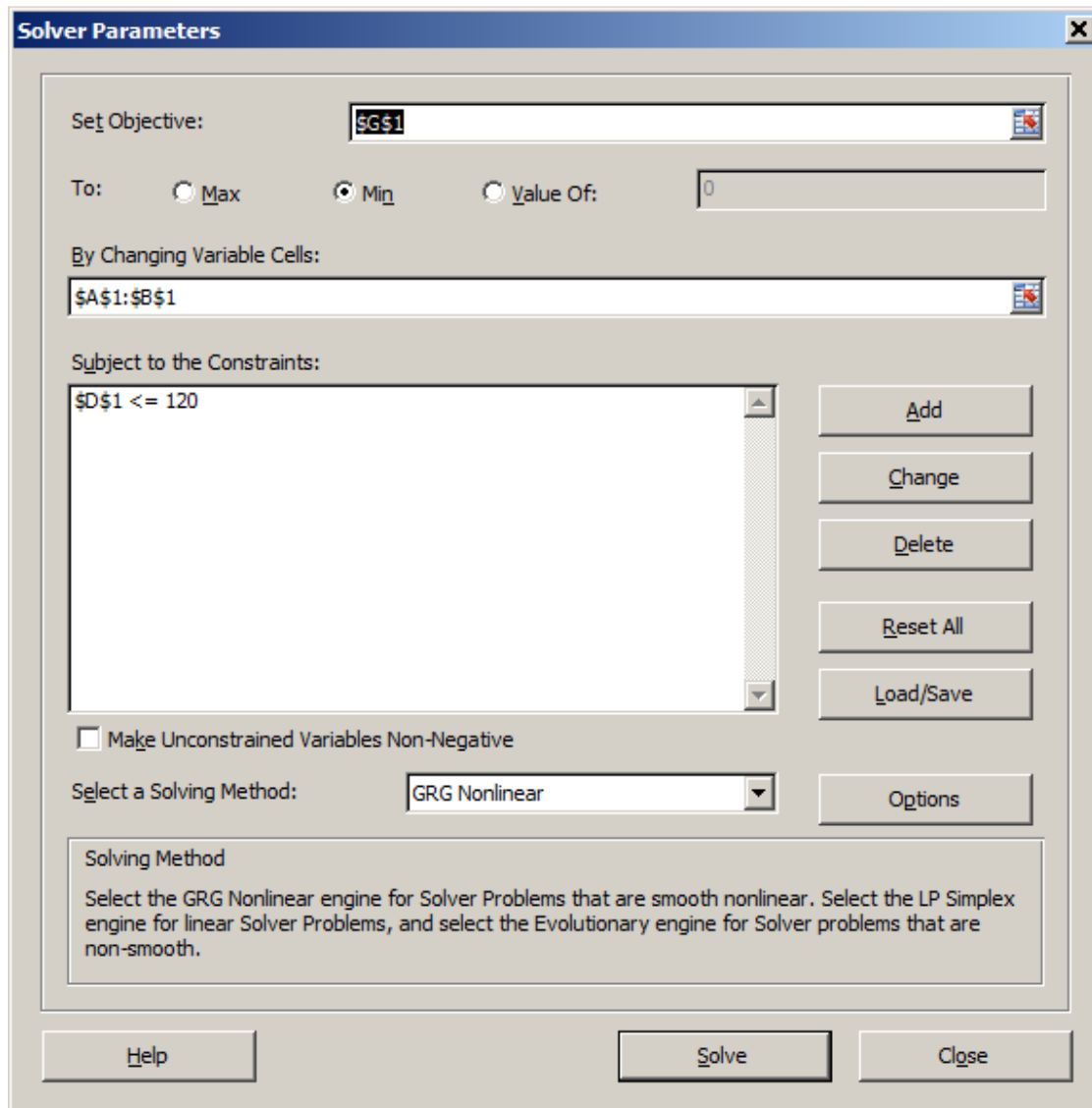
a)

excel_digitaltest_retake1_withanswers.xlsx - Microsoft Excel

	A	B	C	D	E	F	G	H	I	J	K	L	M
1													
2		0	-1	1	1	1	-0.33333	-0.33333	-0.33333	0.333333		1.666667	
3		-2	0	0	1	-4	-5	1	-3	2			-1
4		0	2	-3	0	-4	-3.33333	0.666667	-2.33333	1.333333			0.666667
5		1	1	-2	2	-2	-0.66667	0.333333	-0.66667	0.666667			-0.66667
6													
7													
8													
9													
10													
11													

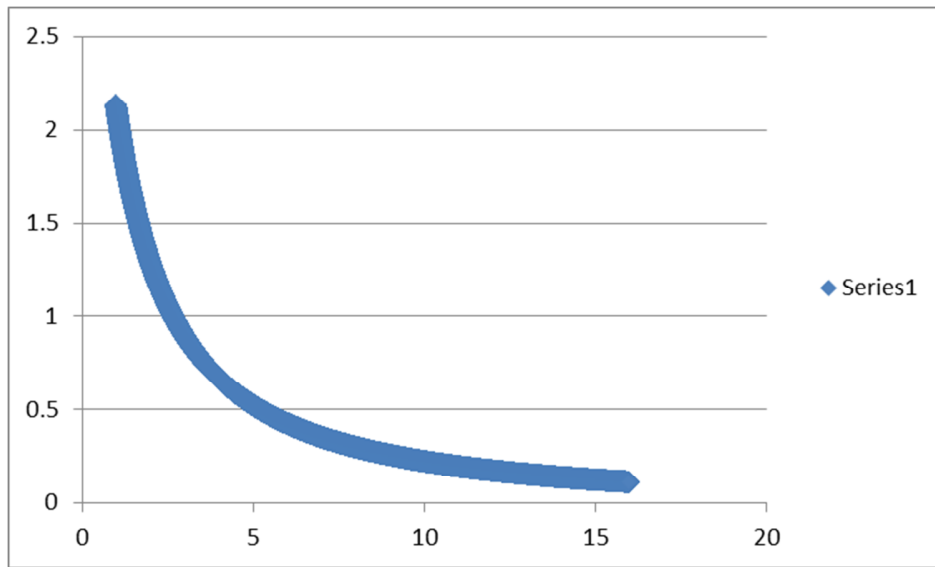
Ready | 100%

b)



Formula for f	$=\text{EXP}(A1-B1)+A1*B1$
Value of f	311457

c)



Do not forget to save this file regularly!
Ready? Use the icon "Tentamen inleveren" to upload your work.